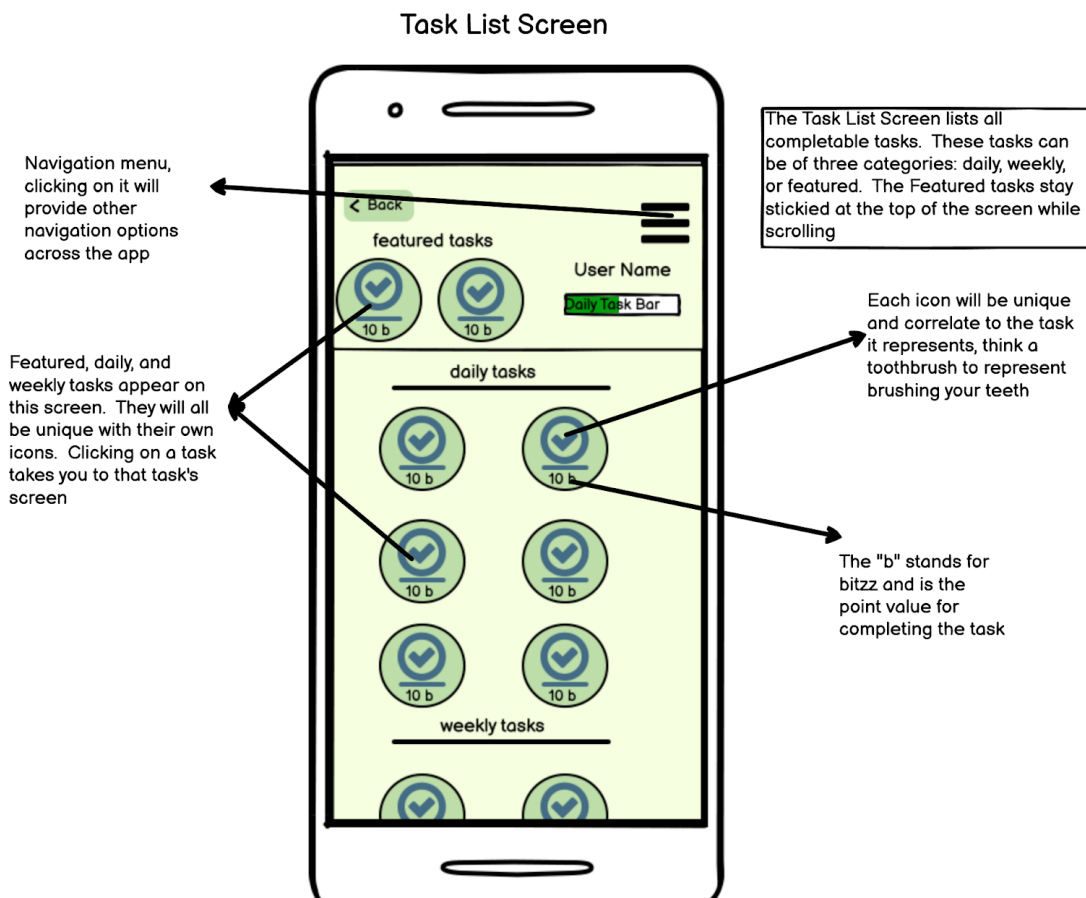
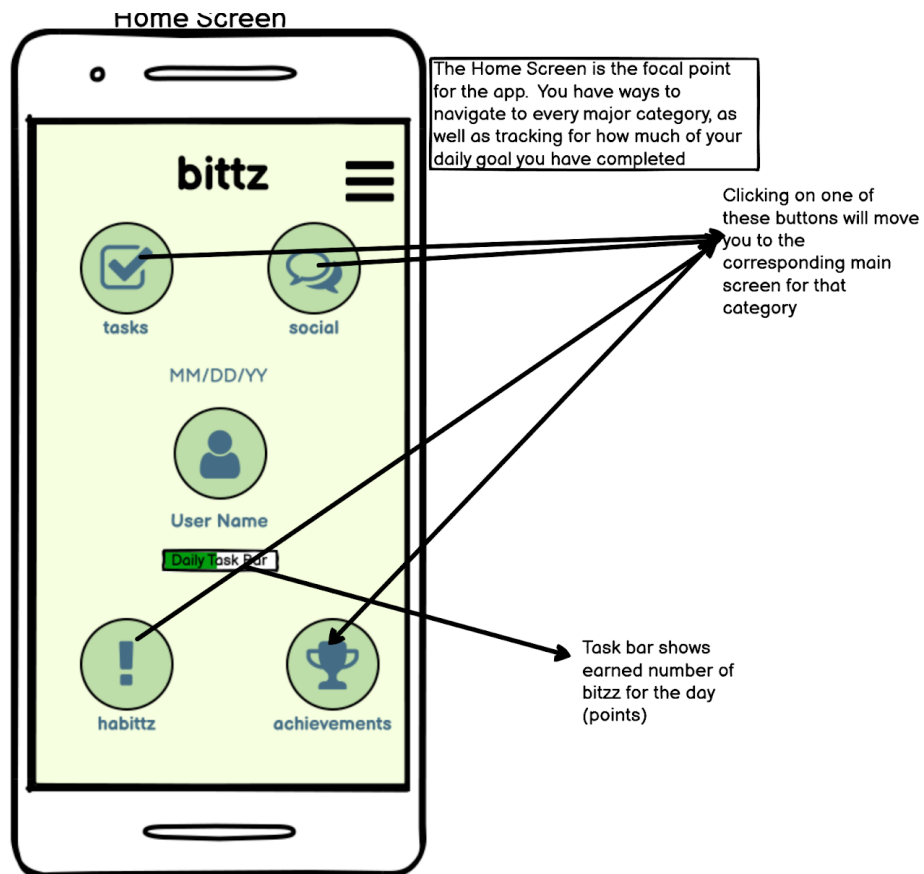
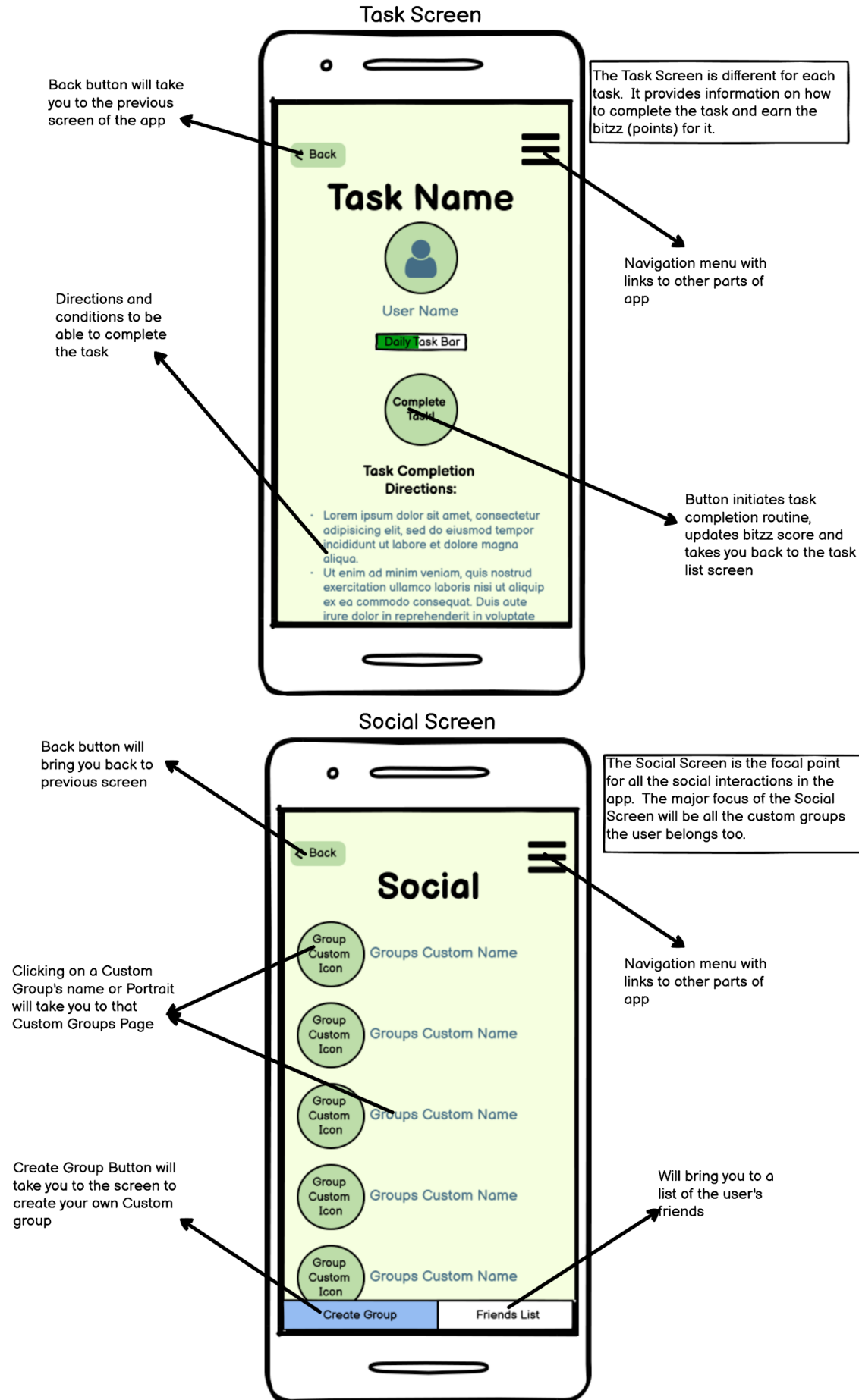
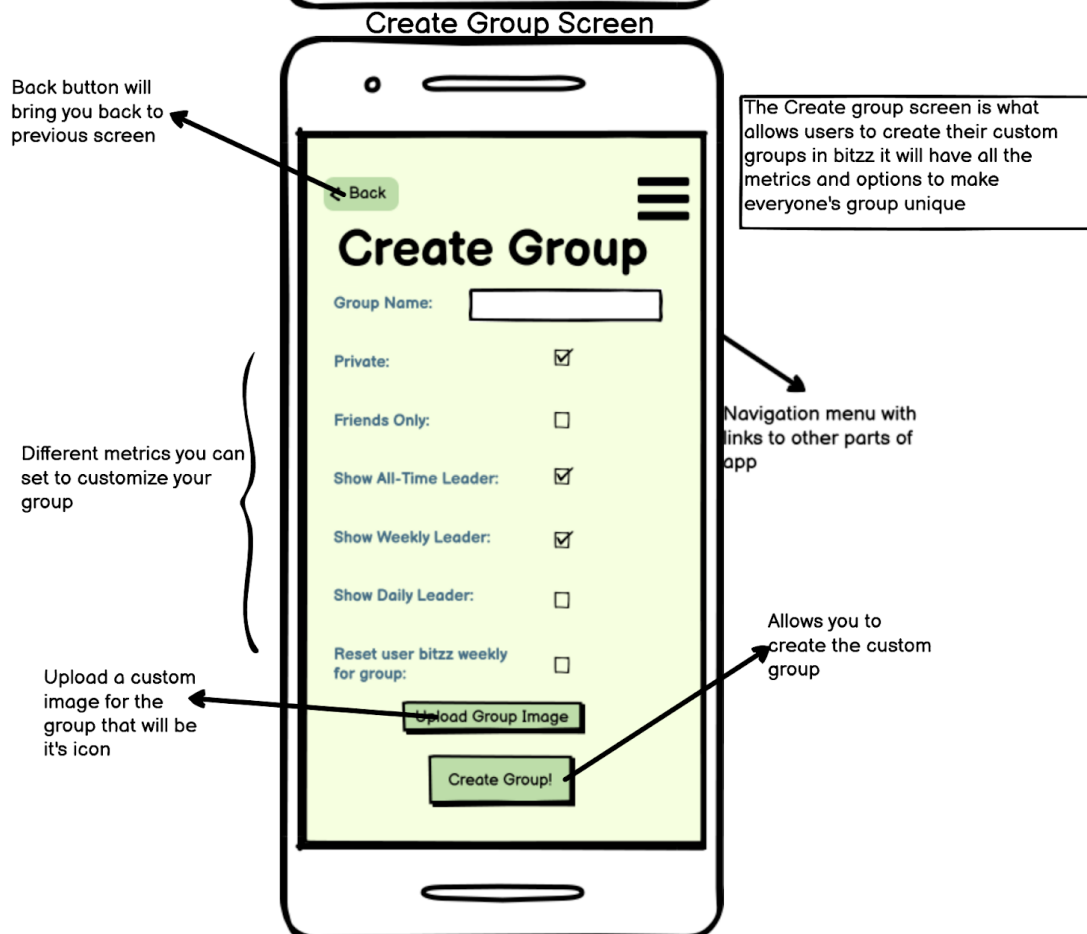
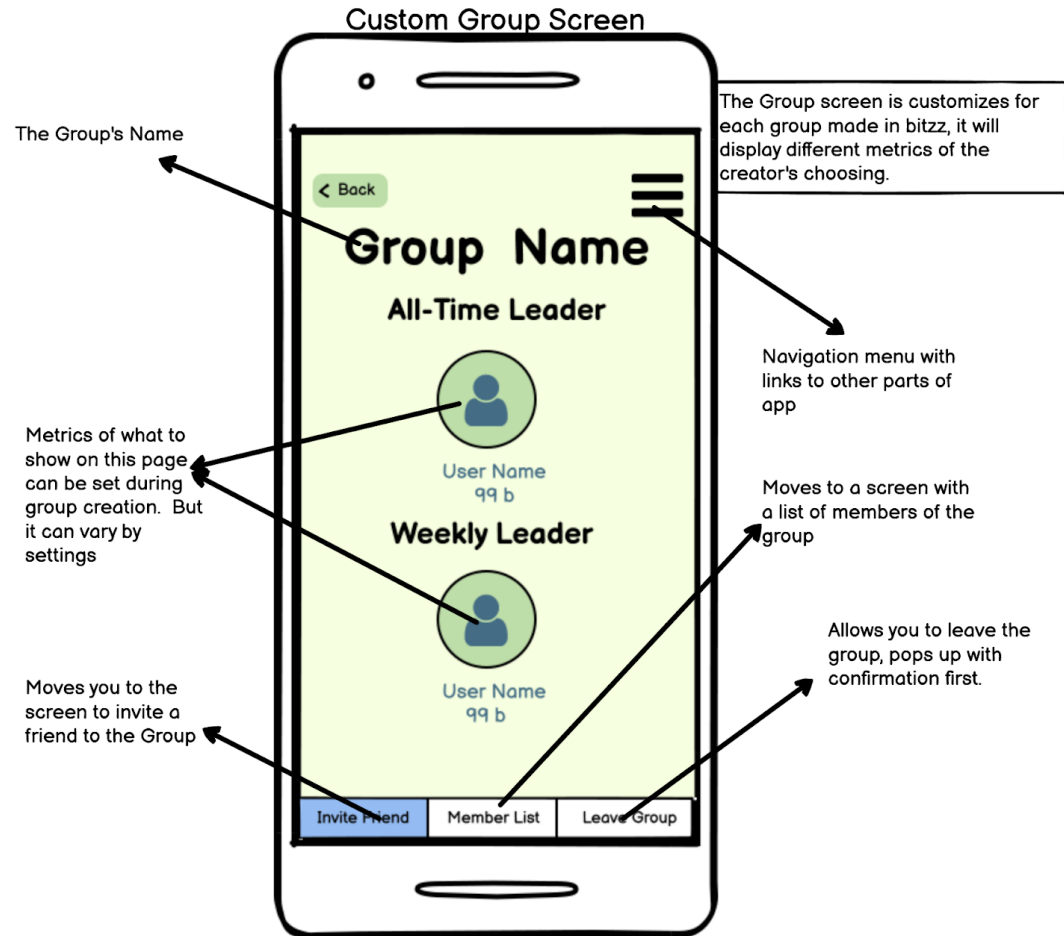
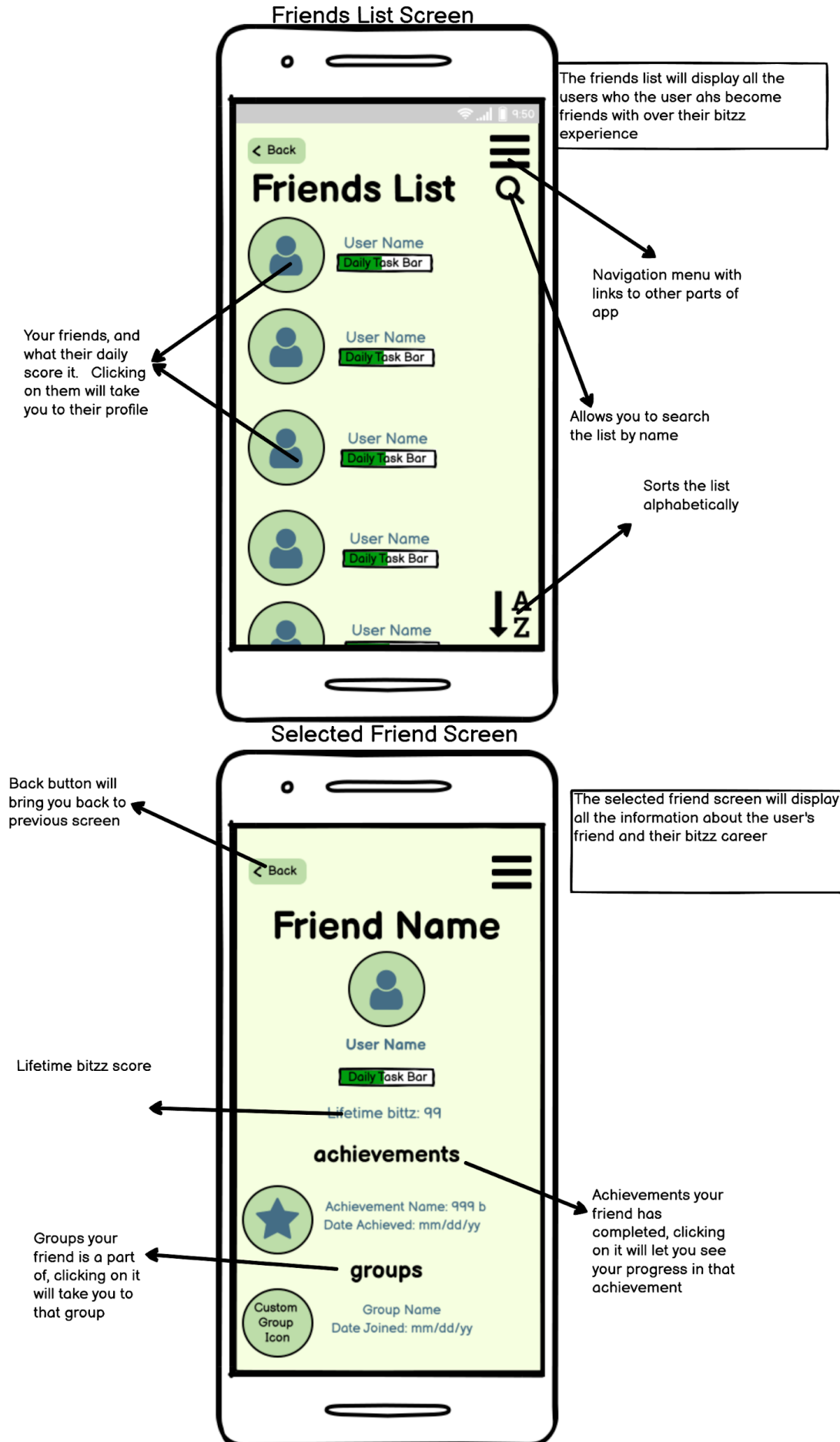
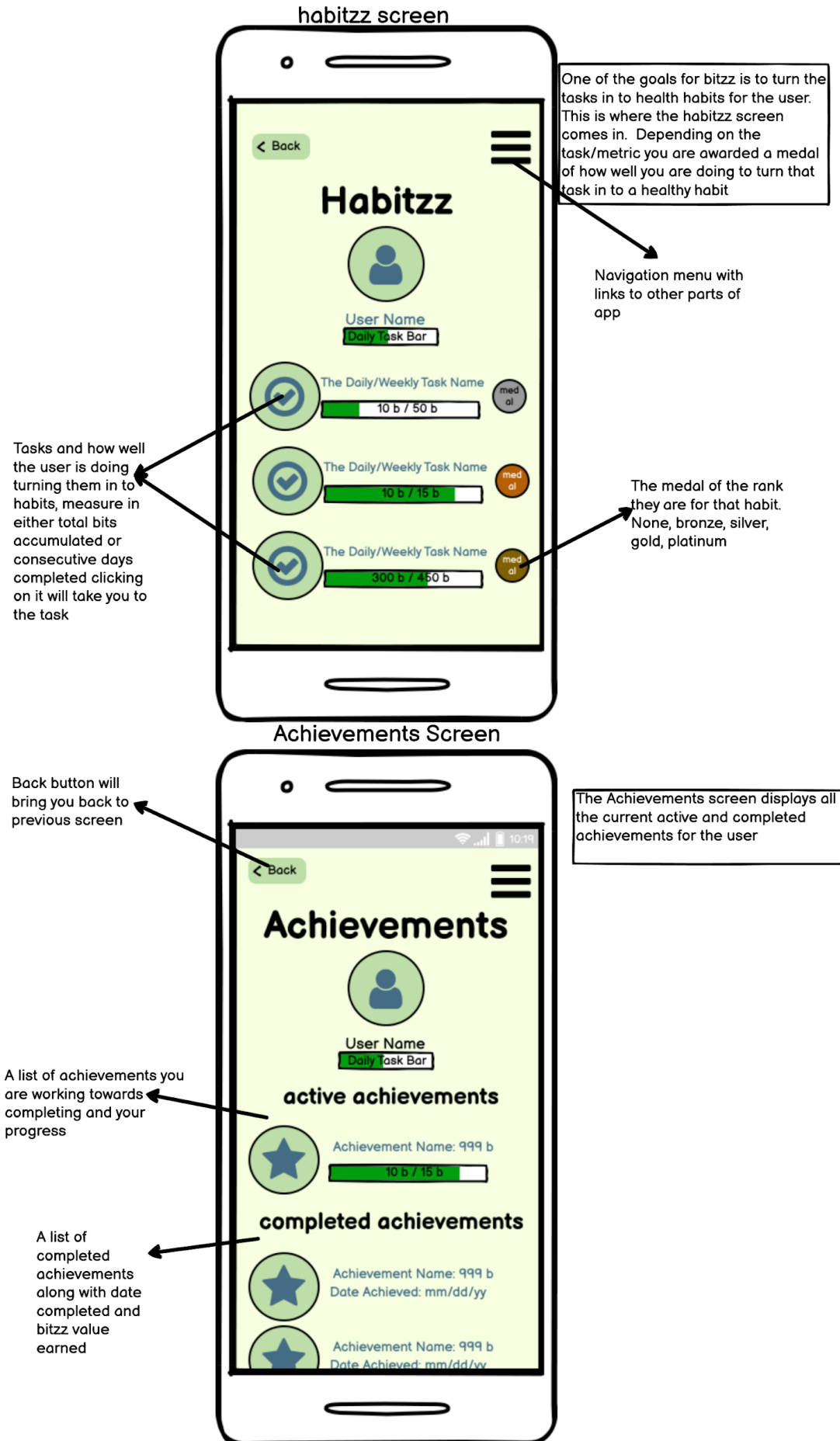


**Workflow:**

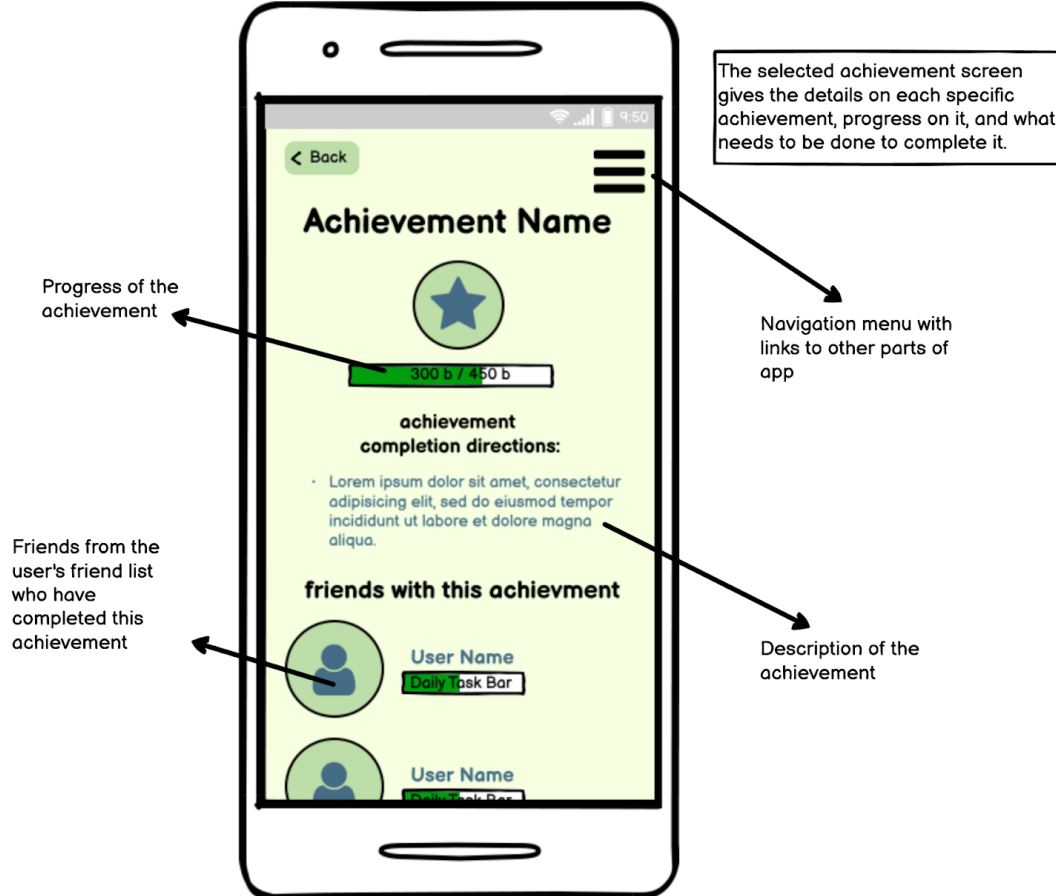




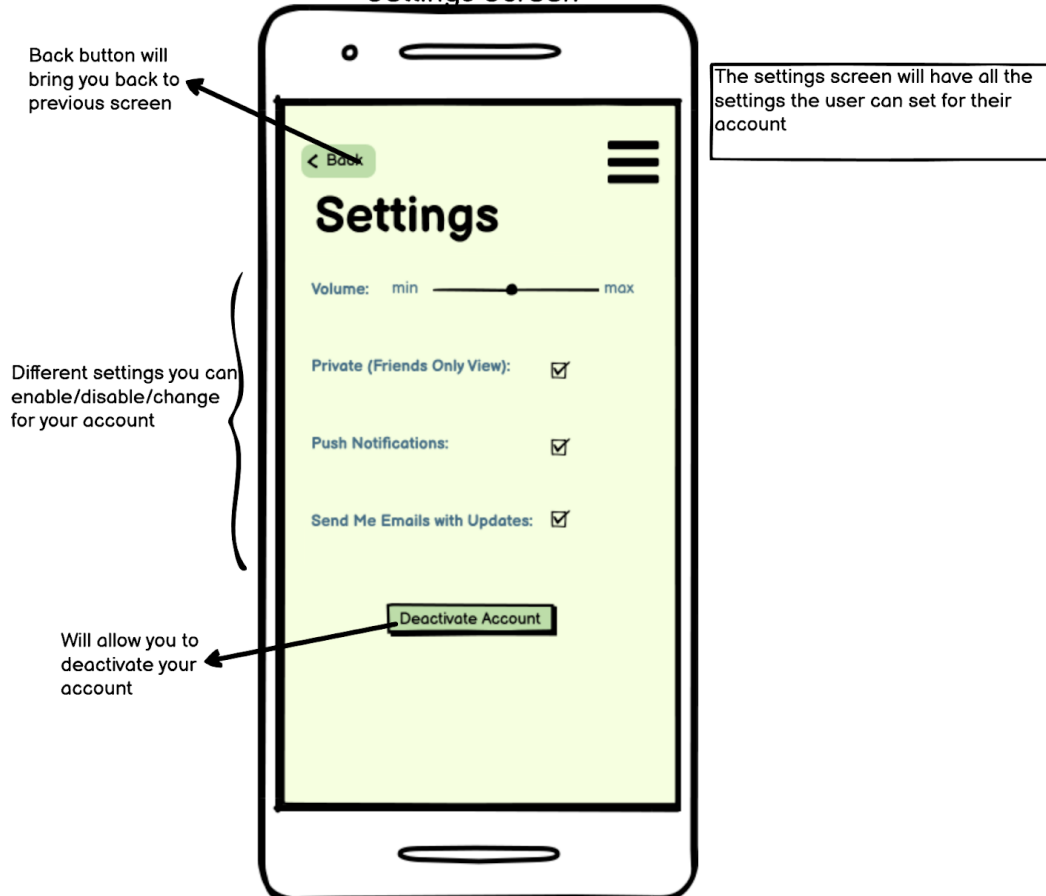


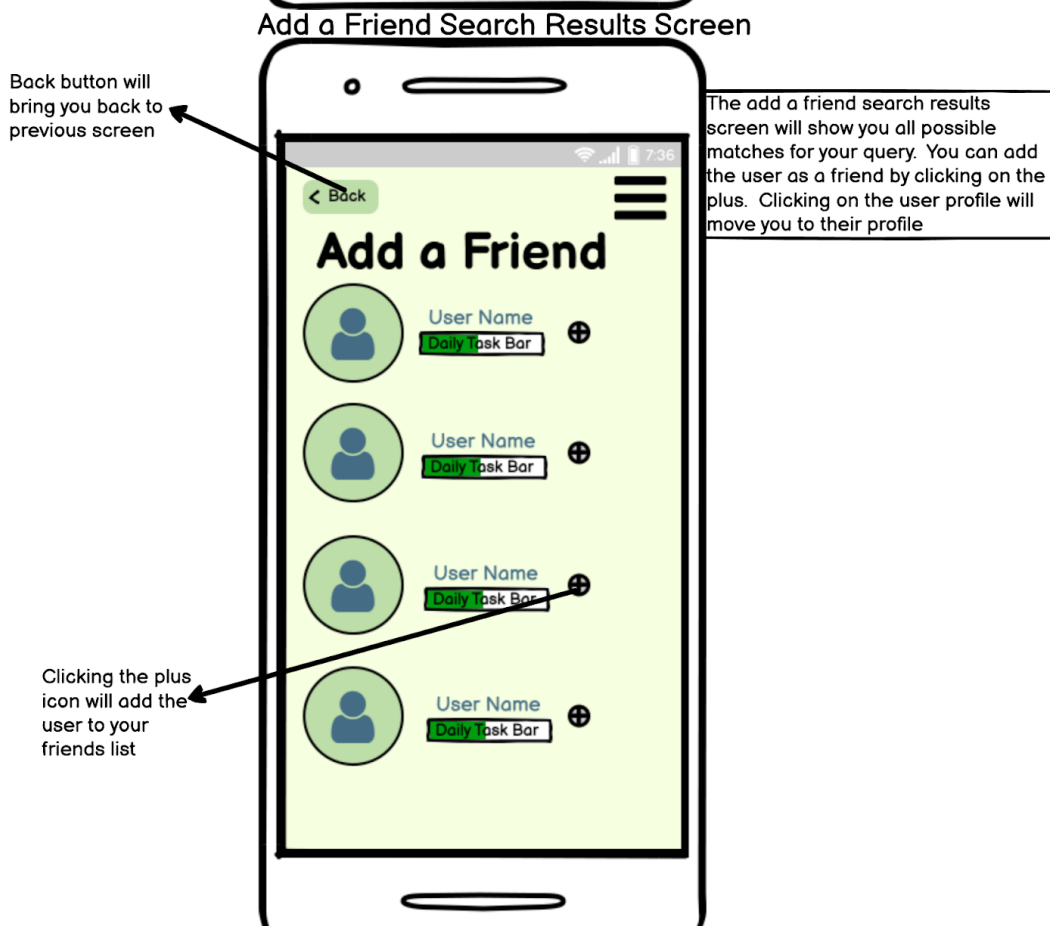
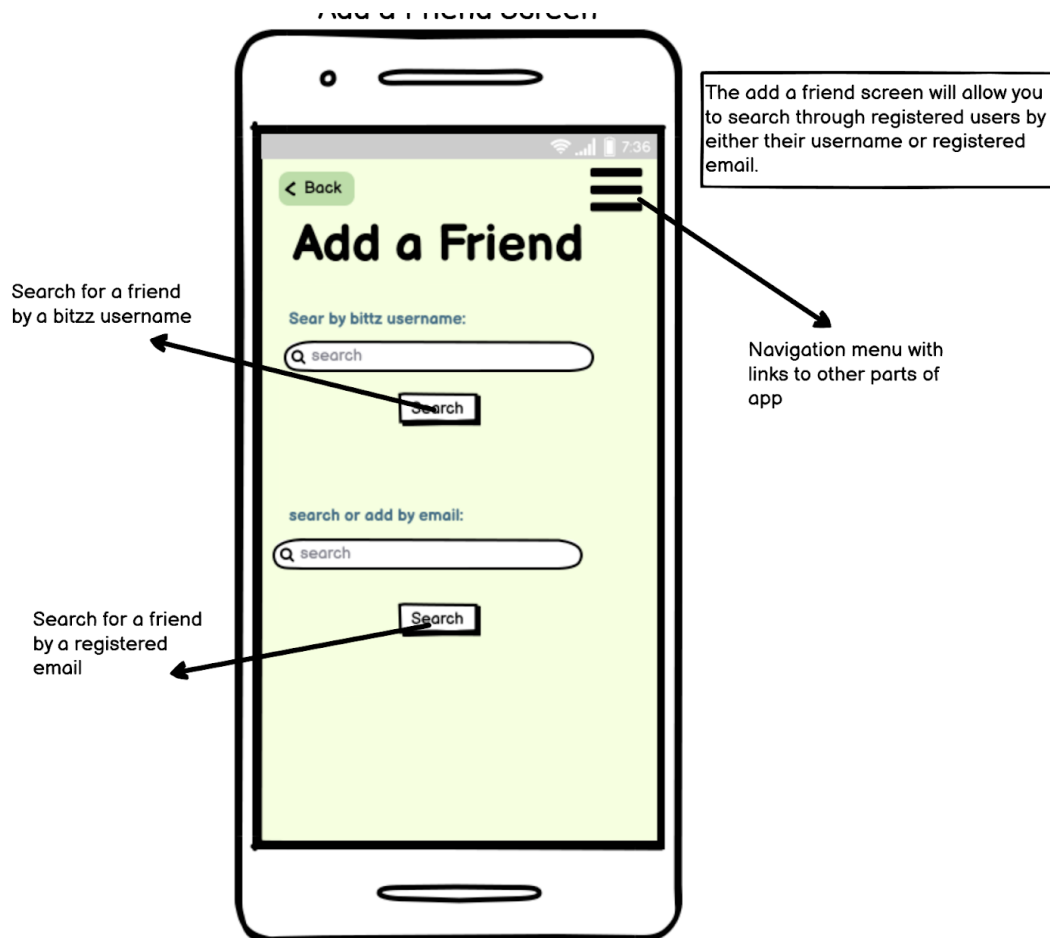


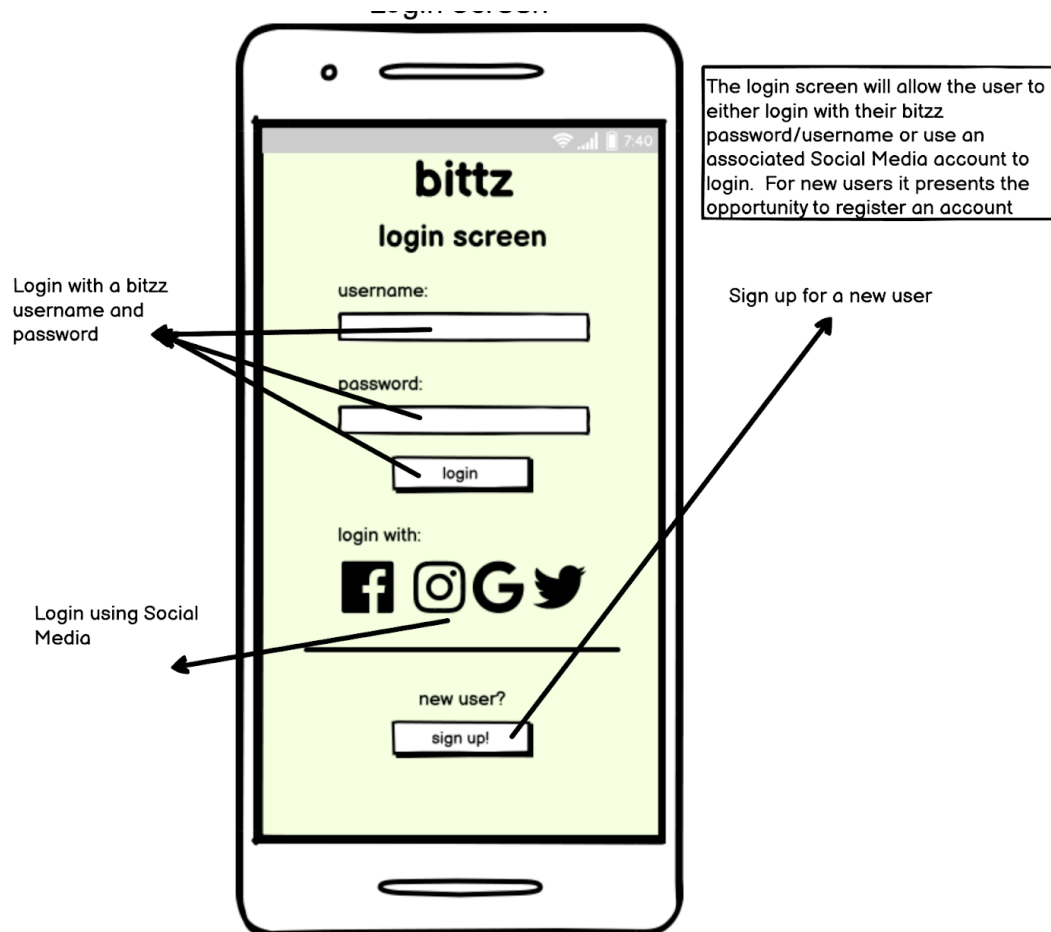
## Selected Achievement Screen



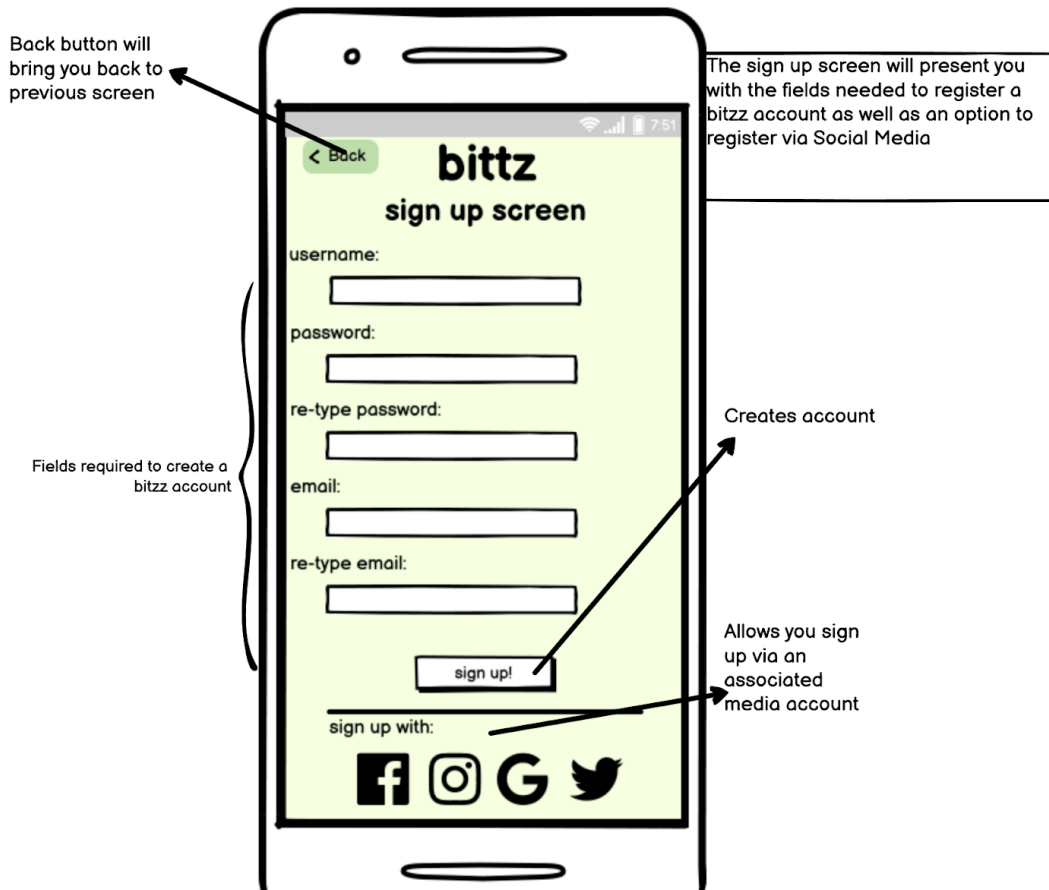
## Settings Screen



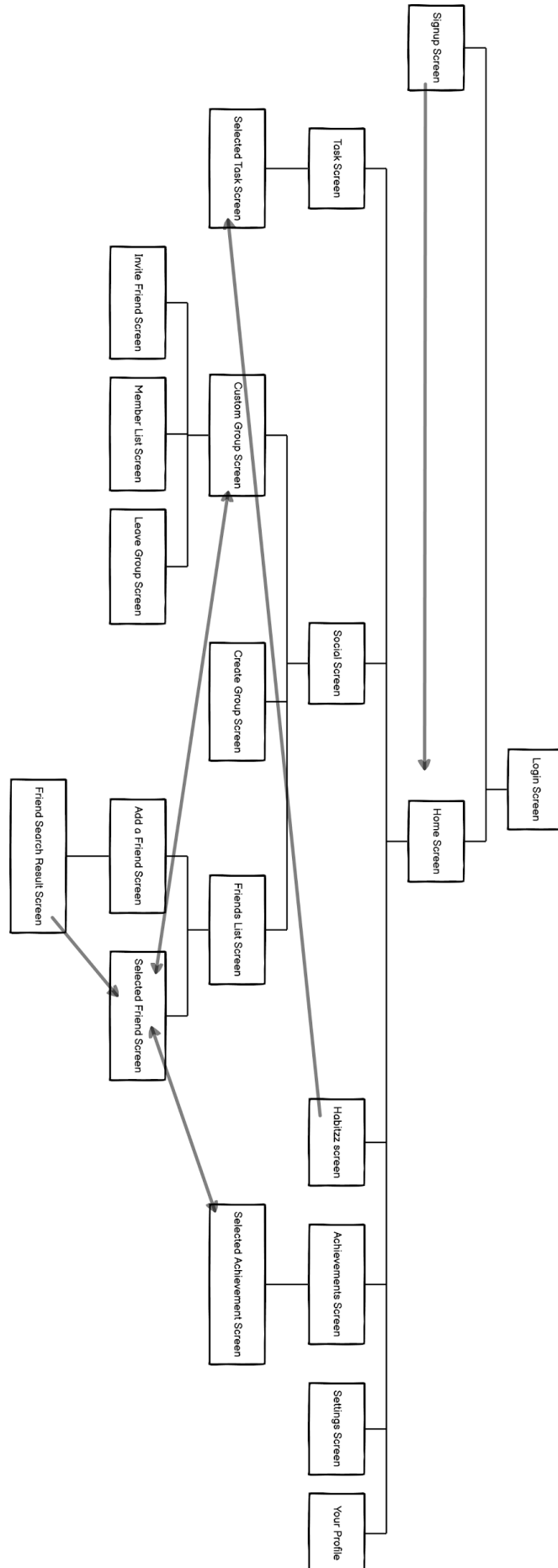




### Add a Friend Search Results Screen







Login Screen:

The image is a hand-drawn sketch of a mobile application login screen. It is enclosed in a thick black rectangular border. At the top, there is a grey header bar containing icons for Wi-Fi, cellular signal, and battery, along with the time '7:40'. Below the header, the word 'bittz' is written in a large, bold, black sans-serif font. Underneath 'bittz', the words 'login screen' are written in a slightly smaller, bold, black sans-serif font. The main area of the screen has a light green background. It contains two text labels: 'username:' and 'password:', both in a black sans-serif font. Each label is followed by a white rectangular input field with a black border. Below the password field is a black rectangular button with the word 'login' in white. Further down, the text 'login with:' is followed by four social media icons: Facebook (a black square with a white 'f'), Instagram (a black camera outline), Google (a large black 'G'), and Twitter (a black bird silhouette). A horizontal black line separates this section from the bottom. At the bottom, the text 'new user?' is followed by a black rectangular button with the words 'sign up!' in white.

7:40

# bittz

## login screen

username:

password:

login

login with:

f i G t

---

new user?

sign up!

## Sign-up Screen:

A hand-drawn sketch of a mobile app sign-up screen. The screen has a light green background and is framed by a thick black border. At the top, there is a grey status bar with icons for Wi-Fi, cellular signal, battery, and the time 7:51. Below the status bar, on the left, is a green button with a white back arrow and the text '< Back'. In the center, the app name 'bittz' is written in a large, bold, black font, followed by 'sign up screen' in a slightly smaller, bold, black font. Below the title, there are five input fields, each preceded by a label: 'username:', 'password:', 're-type password:', 'email:', and 're-type email:'. Each input field is a simple white rectangle with a black border. Below the input fields is a white button with a black border and the text 'sign up!'. At the bottom, there is a horizontal line followed by the text 'sign up with:'. Below this text are four social media icons: Facebook (a black square with a white 'f'), Instagram (a black camera outline), Google (a large black 'G'), and Twitter (a black bird silhouette).

< Back

# bittz

## sign up screen

username:

password:

re-type password:

email:

re-type email:

sign up!

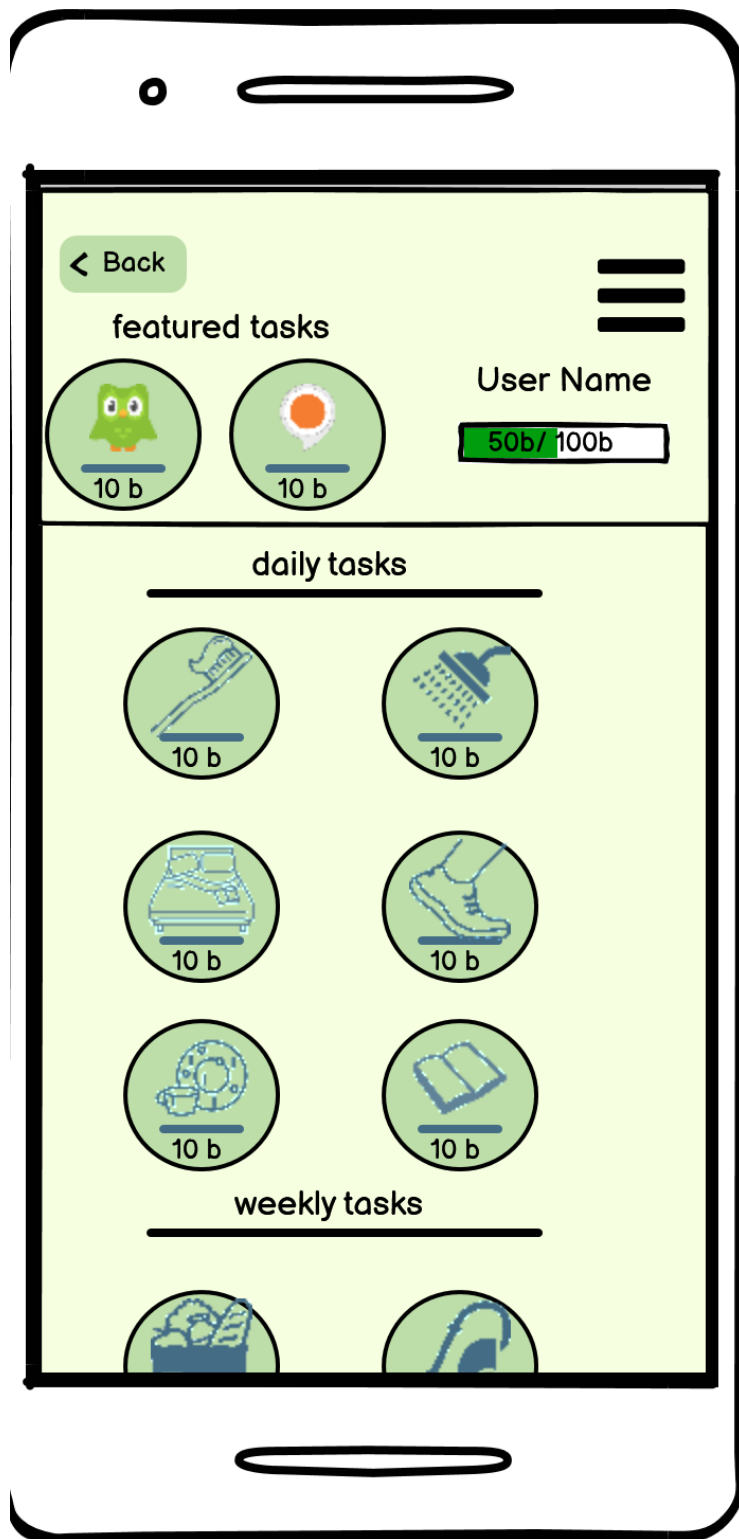
sign up with:

f i G t

Home Screen:



## Task List Screen:

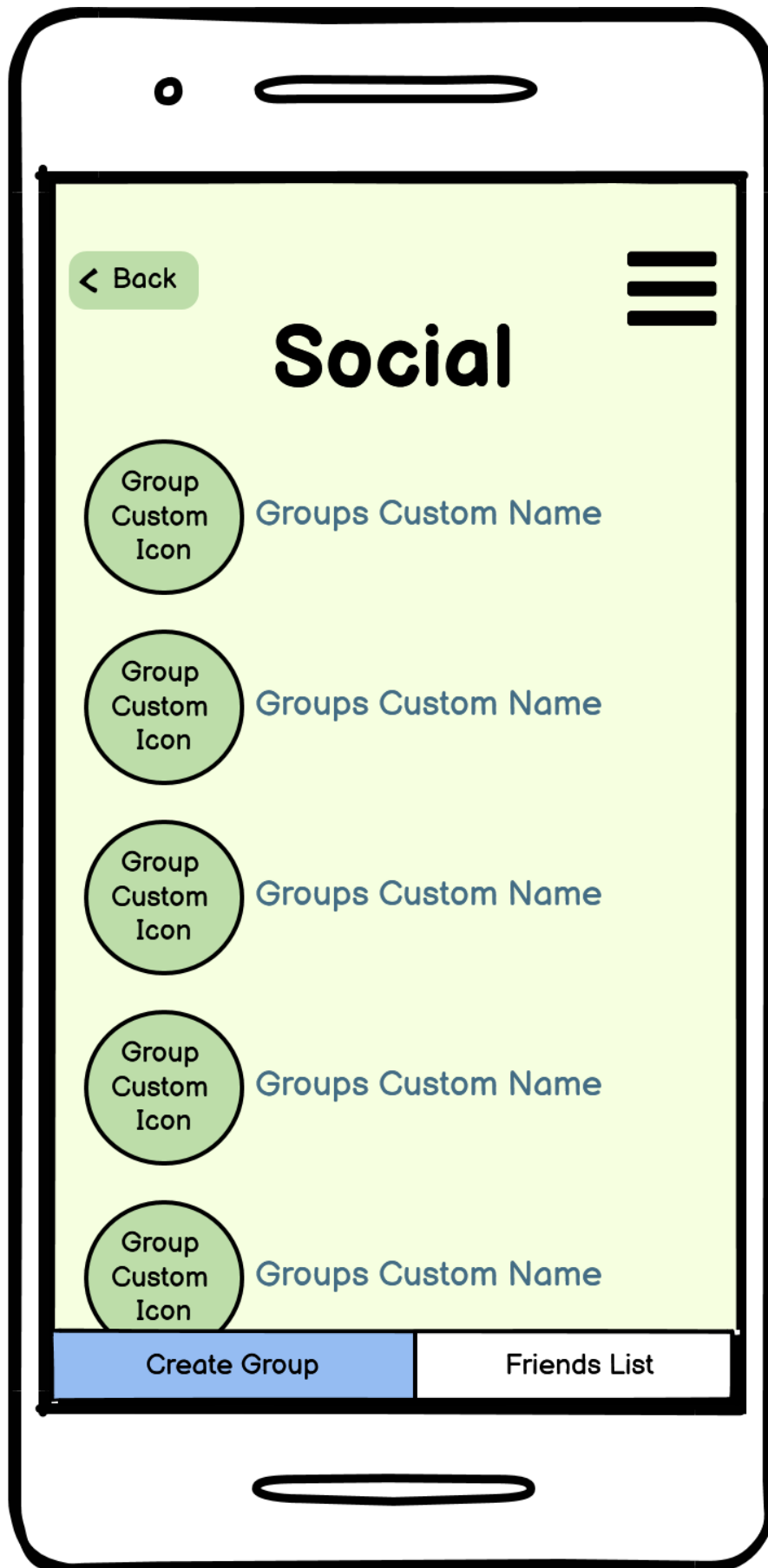


**Task Screen Minimized Directions:**



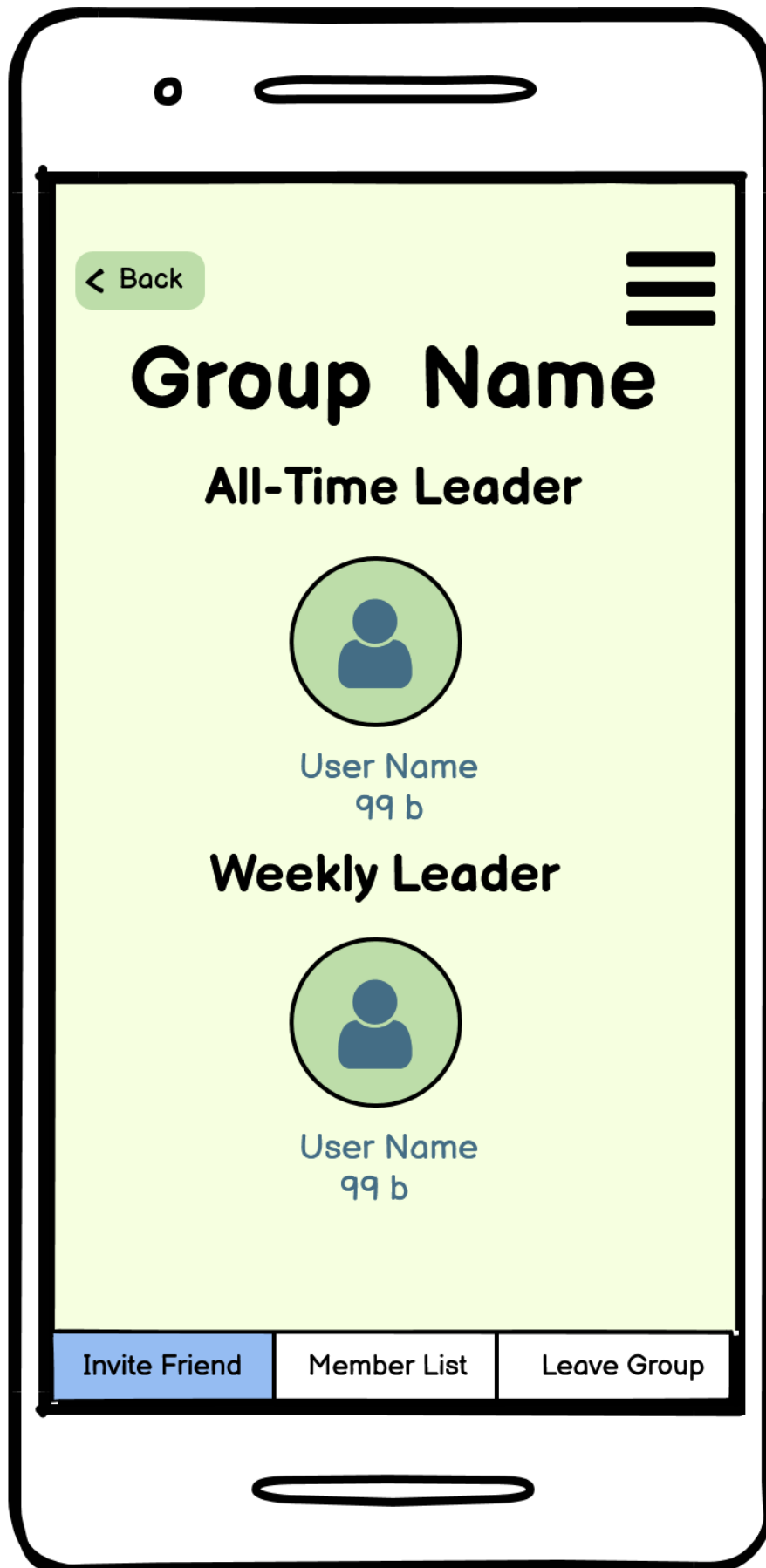
## Task Screen:



**Social Screen:**



Custom Group Scree:



## Create Group Screen:

A hand-drawn sketch of a mobile application screen for creating a group. The screen has a light green background and is framed by a thick black border representing the phone's bezel. At the top, there is a status bar area with a small circle on the left and a horizontal pill-shaped notch in the center. The app interface includes a top navigation bar with a green button labeled '< Back' on the left and a black hamburger menu icon on the right. The main title 'Create Group' is displayed in a large, bold, black font. Below the title, there is a form with several fields and checkboxes. The first field is 'Group Name:' followed by a white rectangular input box. Below this are five rows of settings, each with a label and a checkbox: 'Private:' with a checked checkbox, 'Friends Only:' with an unchecked checkbox, 'Show All-Time Leader:' with a checked checkbox, 'Show Weekly Leader:' with a checked checkbox, and 'Show Daily Leader:' with an unchecked checkbox. The final row is 'Reset user bitzz weekly for group:' with an unchecked checkbox. At the bottom of the form, there are two green buttons: 'Upload Group Image' and 'Create Group!'. The bottom of the phone frame features a horizontal pill-shaped notch.

< Back

# Create Group

Group Name:

Private: ☒

Friends Only: ☐

Show All-Time Leader: ☒

Show Weekly Leader: ☒

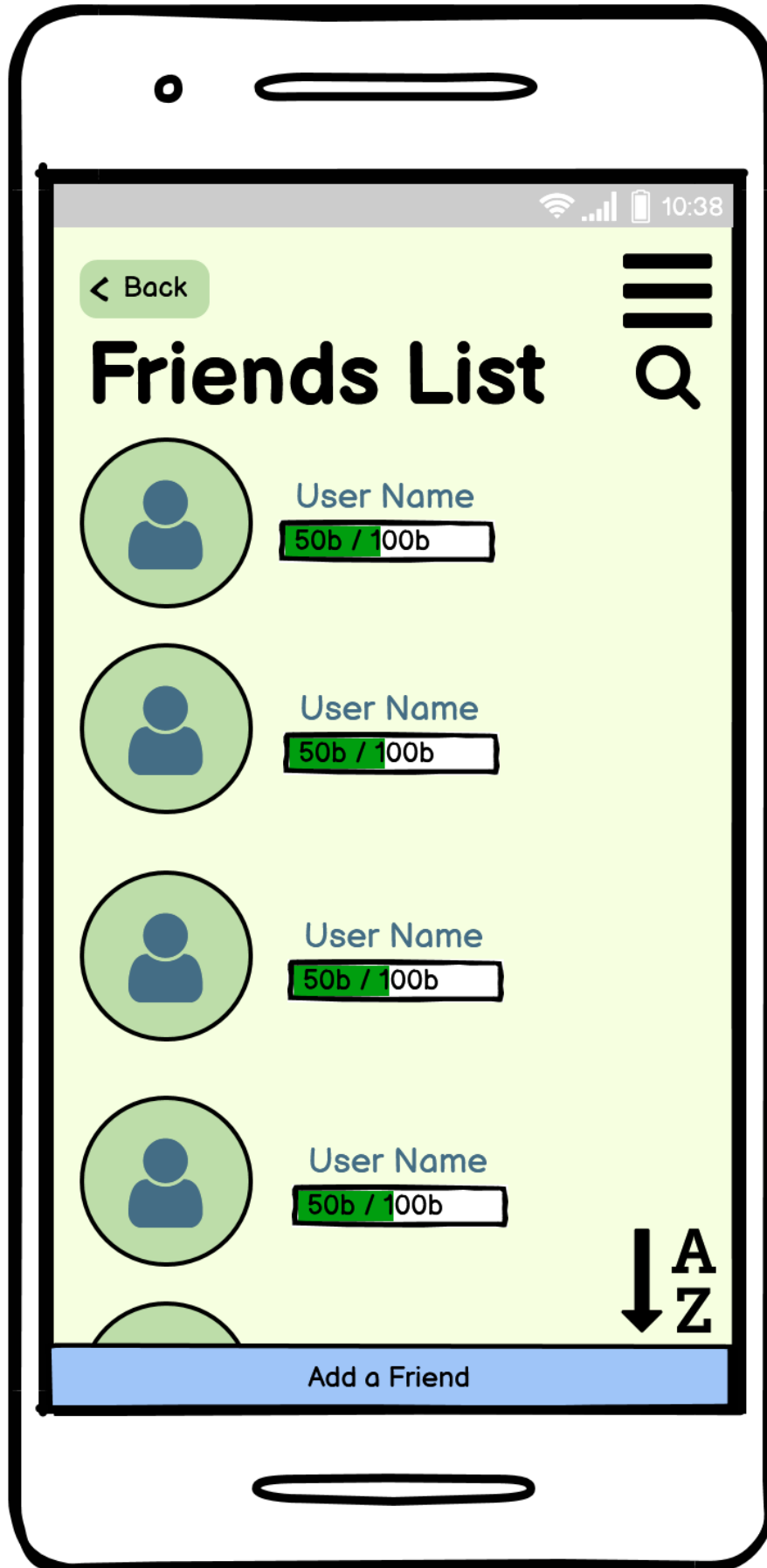
Show Daily Leader: ☐

Reset user bitzz weekly for group: ☐

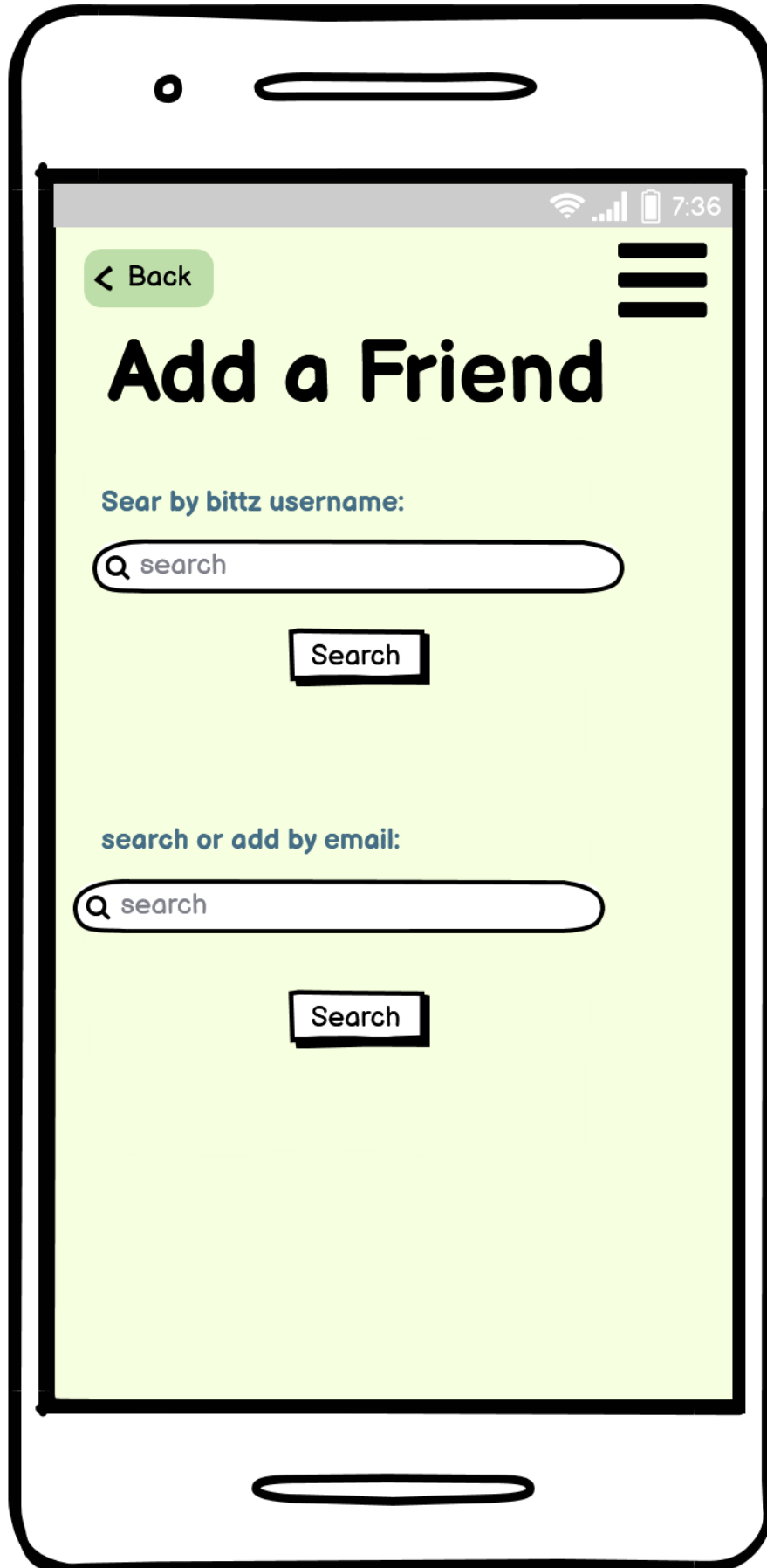
Upload Group Image

Create Group!

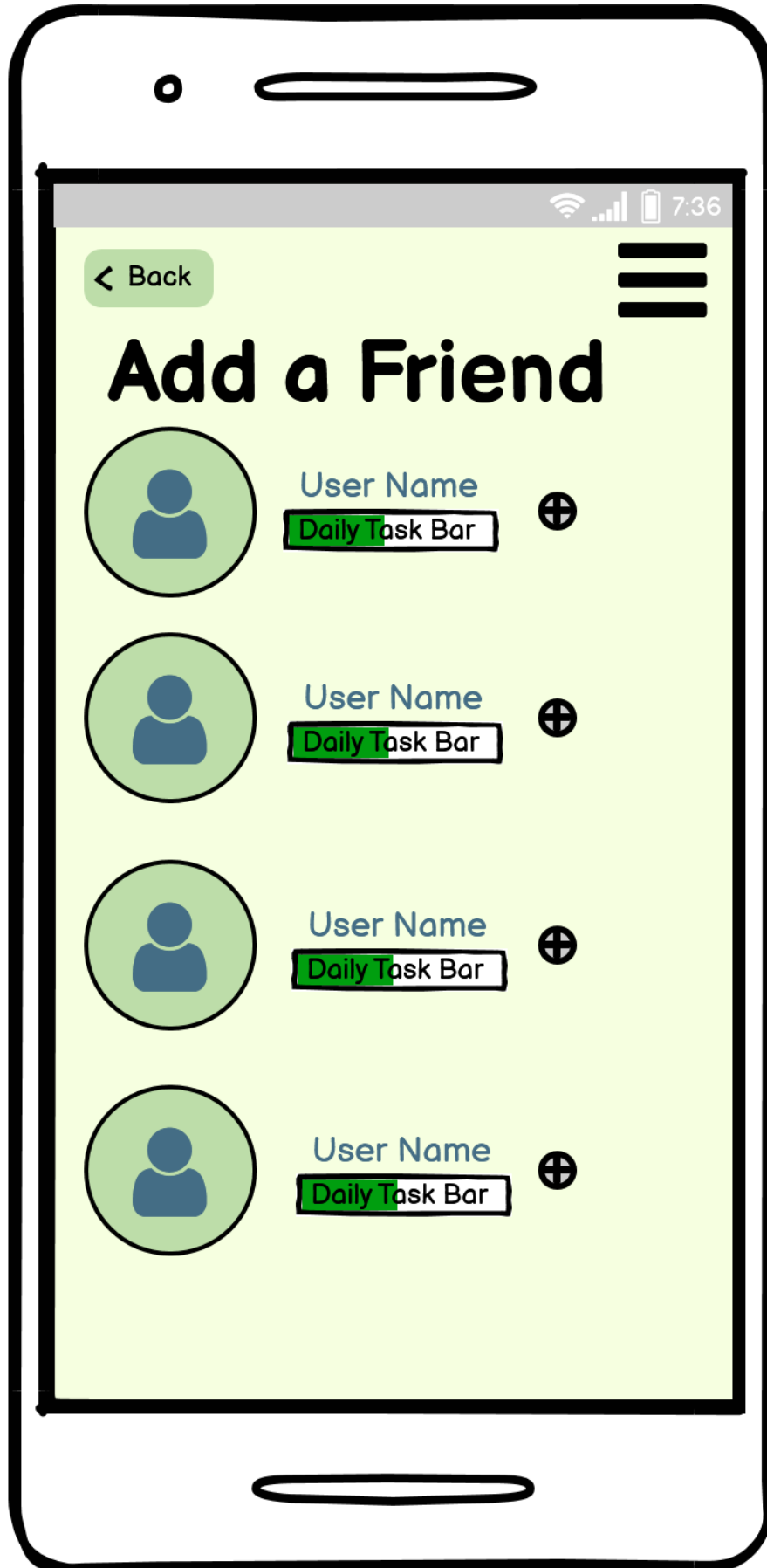
## Friends List:



**Add a Friend Screen:**



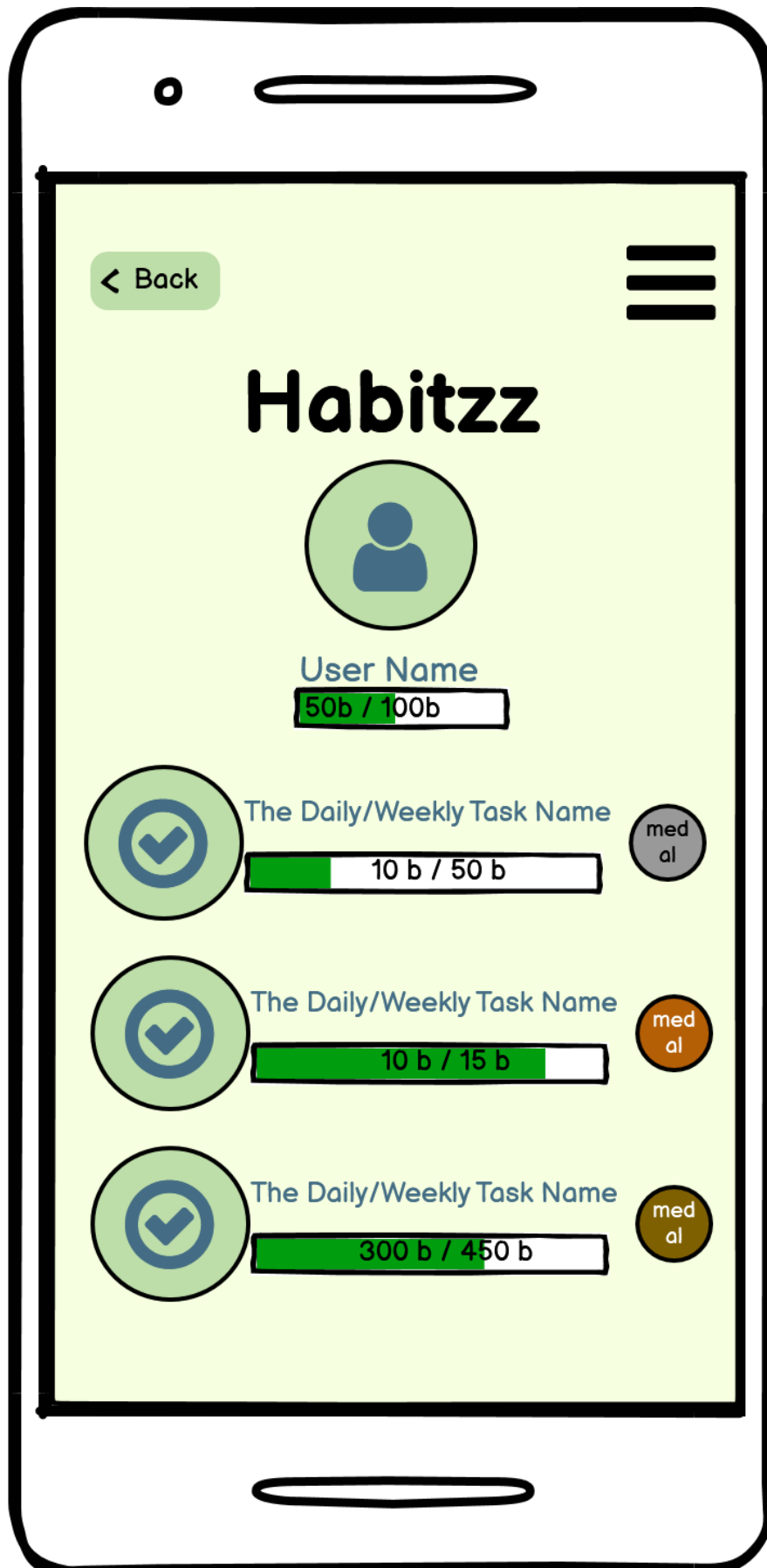
## Add a Friend Search Results:



## Selected Friend Screen:



## Habitzz Screen:

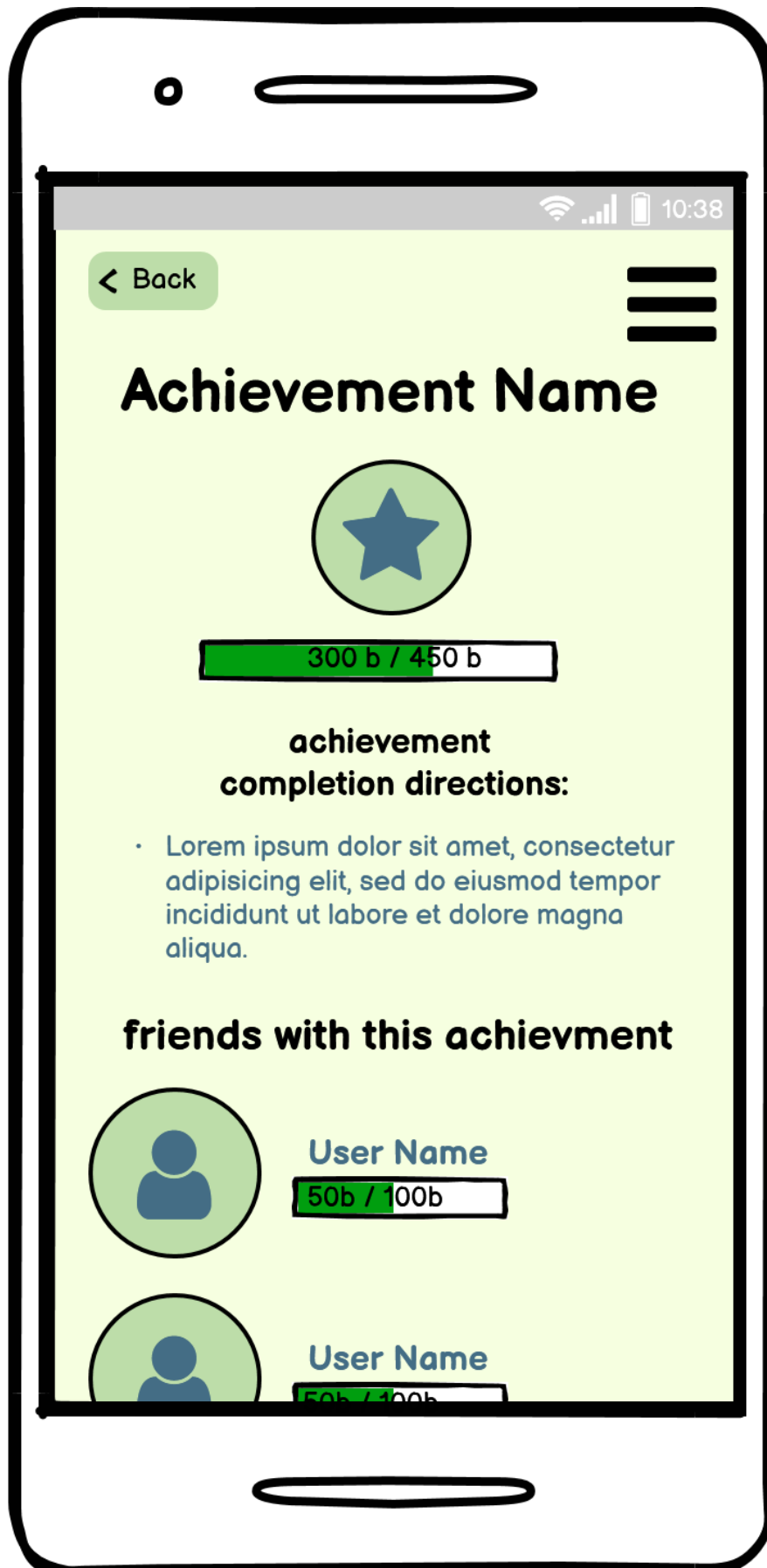


## Achievements Screen:

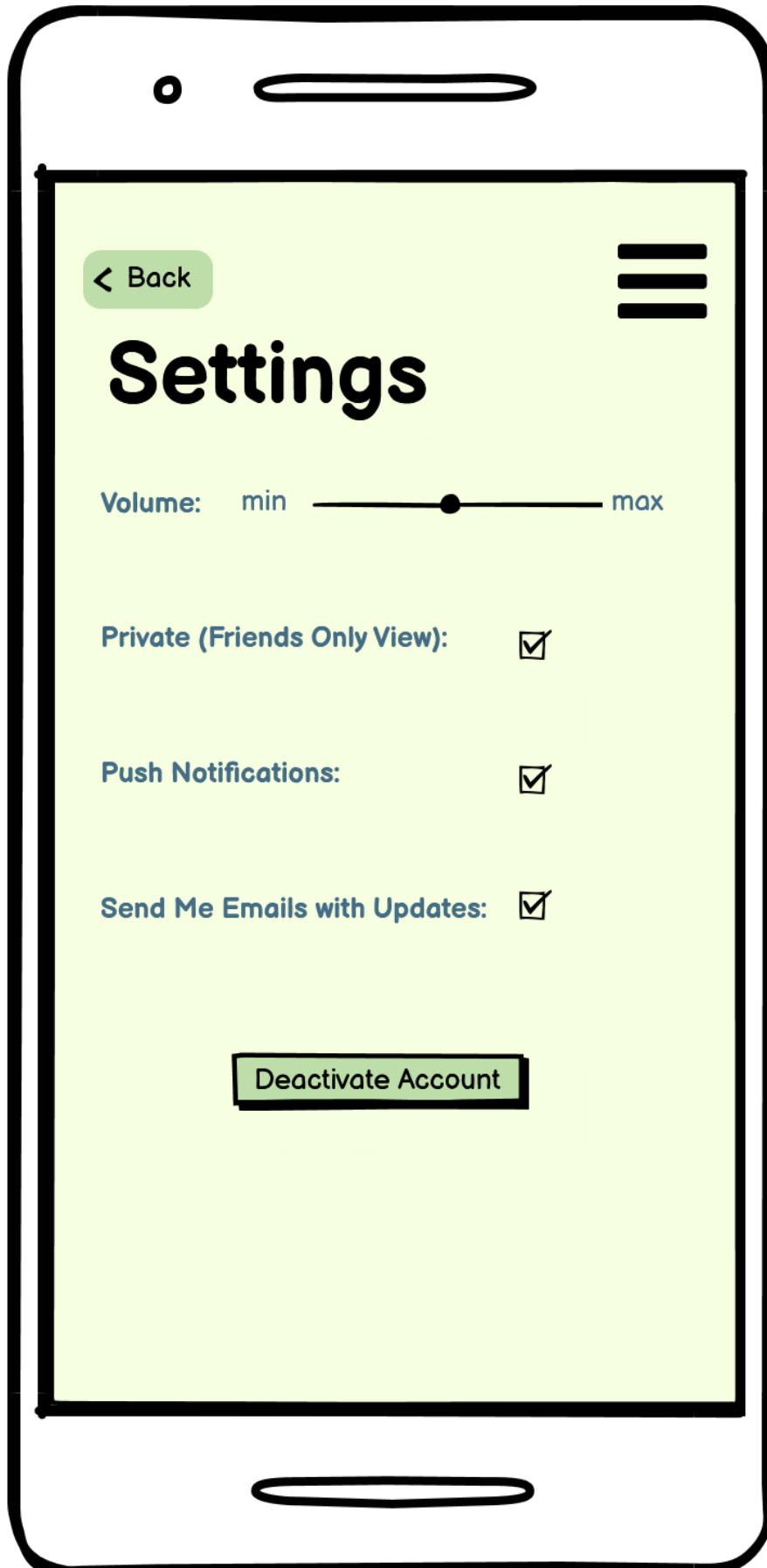




## Selected Achievement Screen:



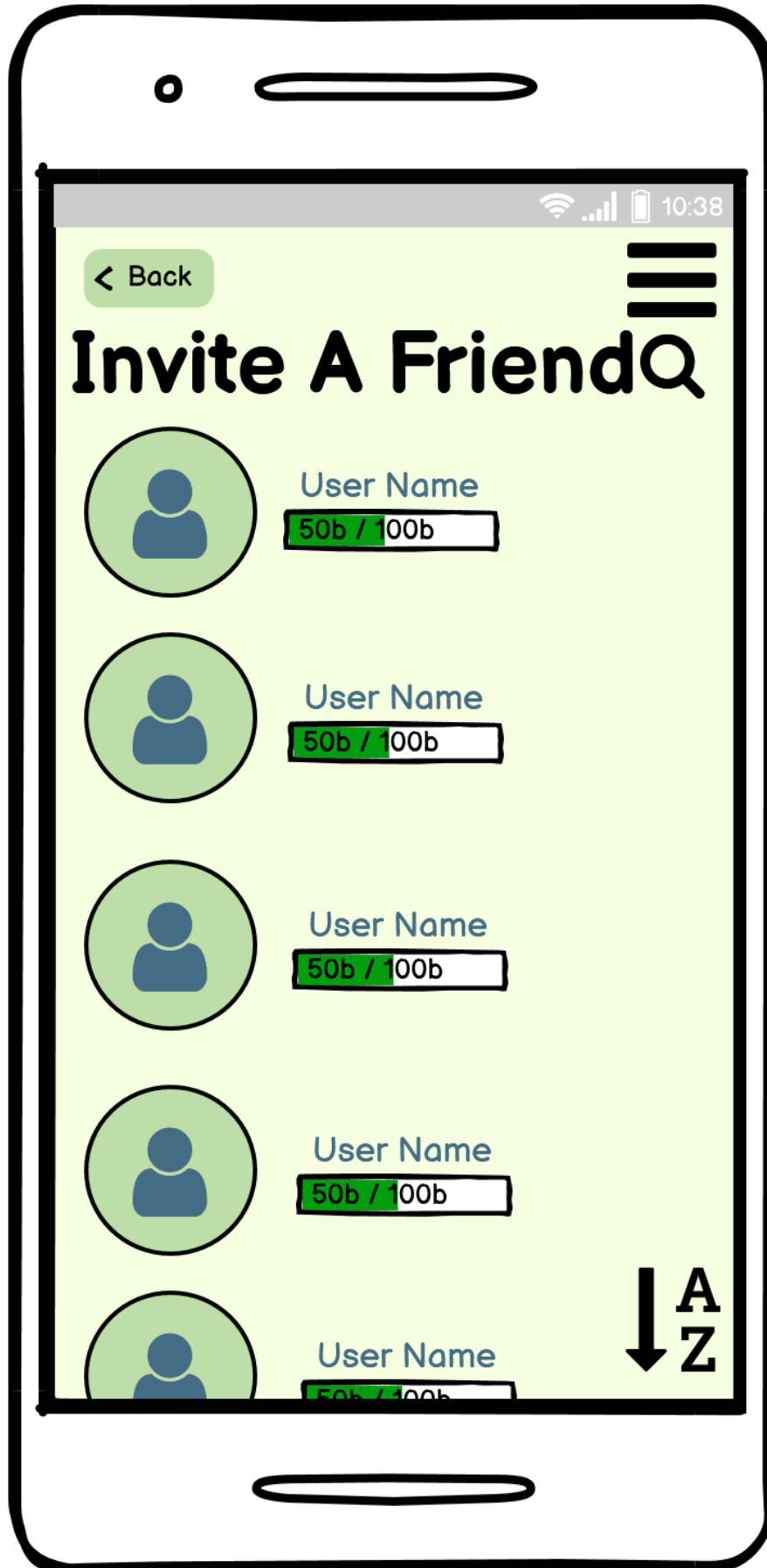
Settings Screen:



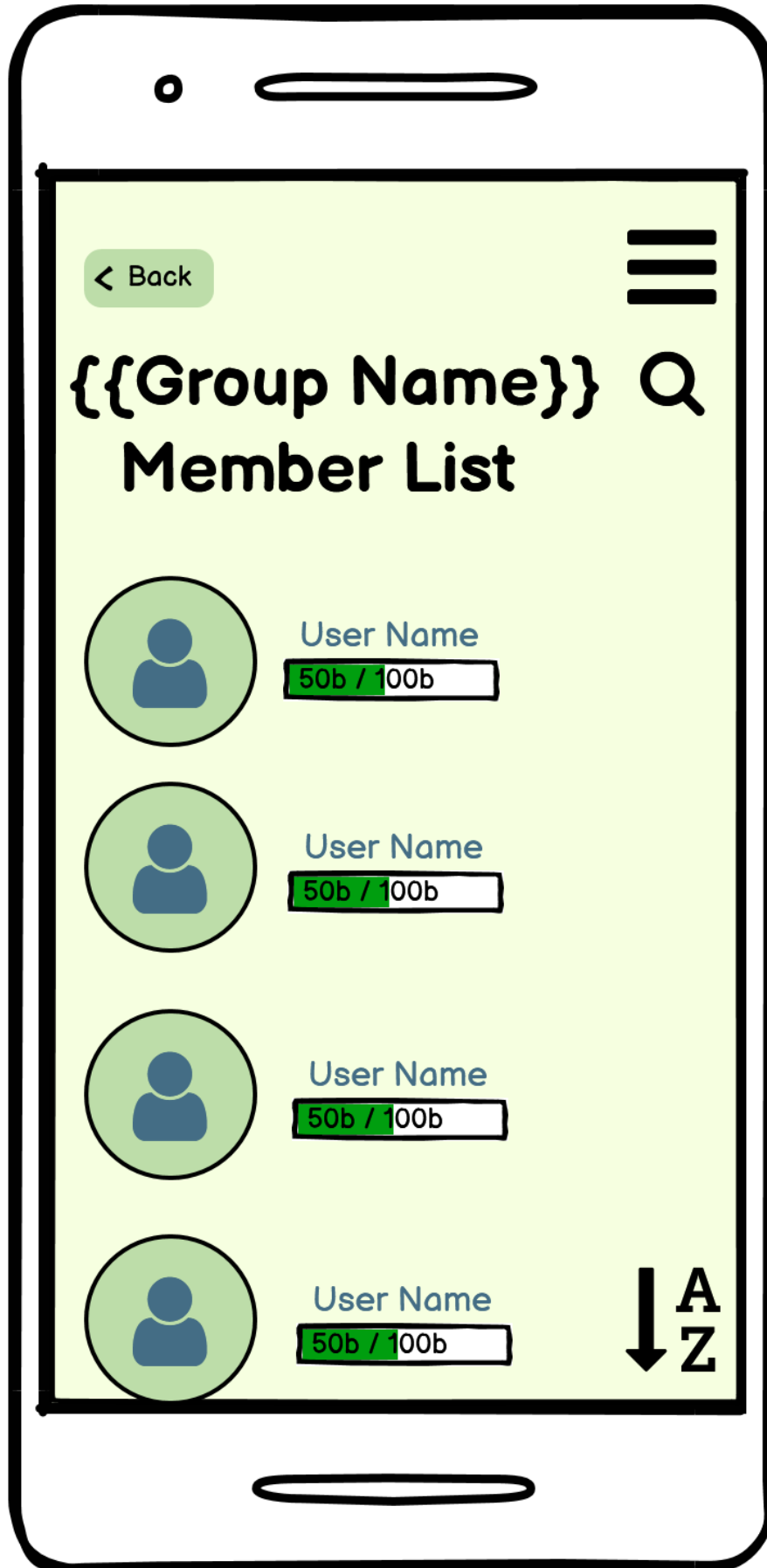
## Your Profile:



## Invite Friend Screen:

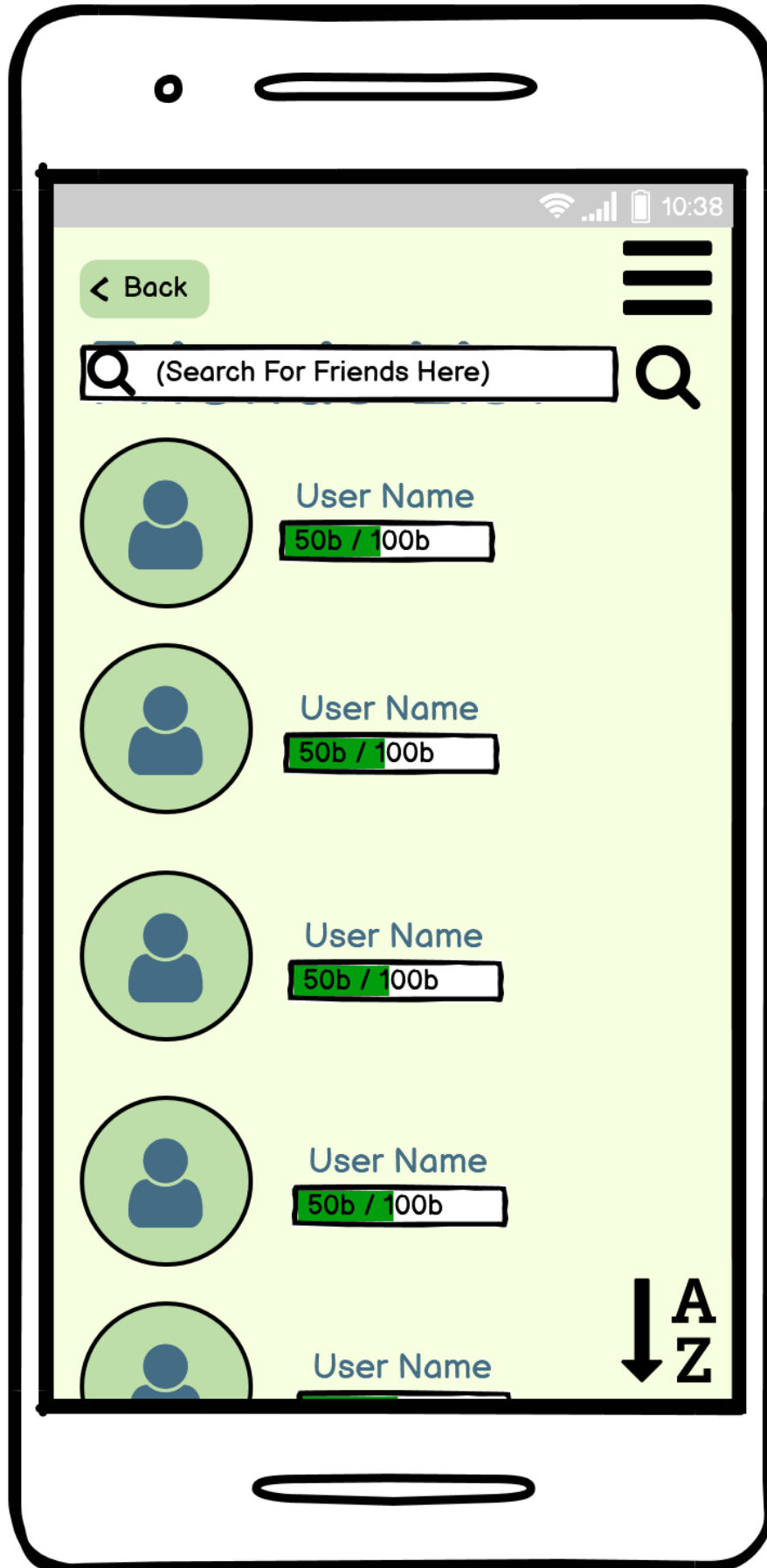


## Member List Screen:

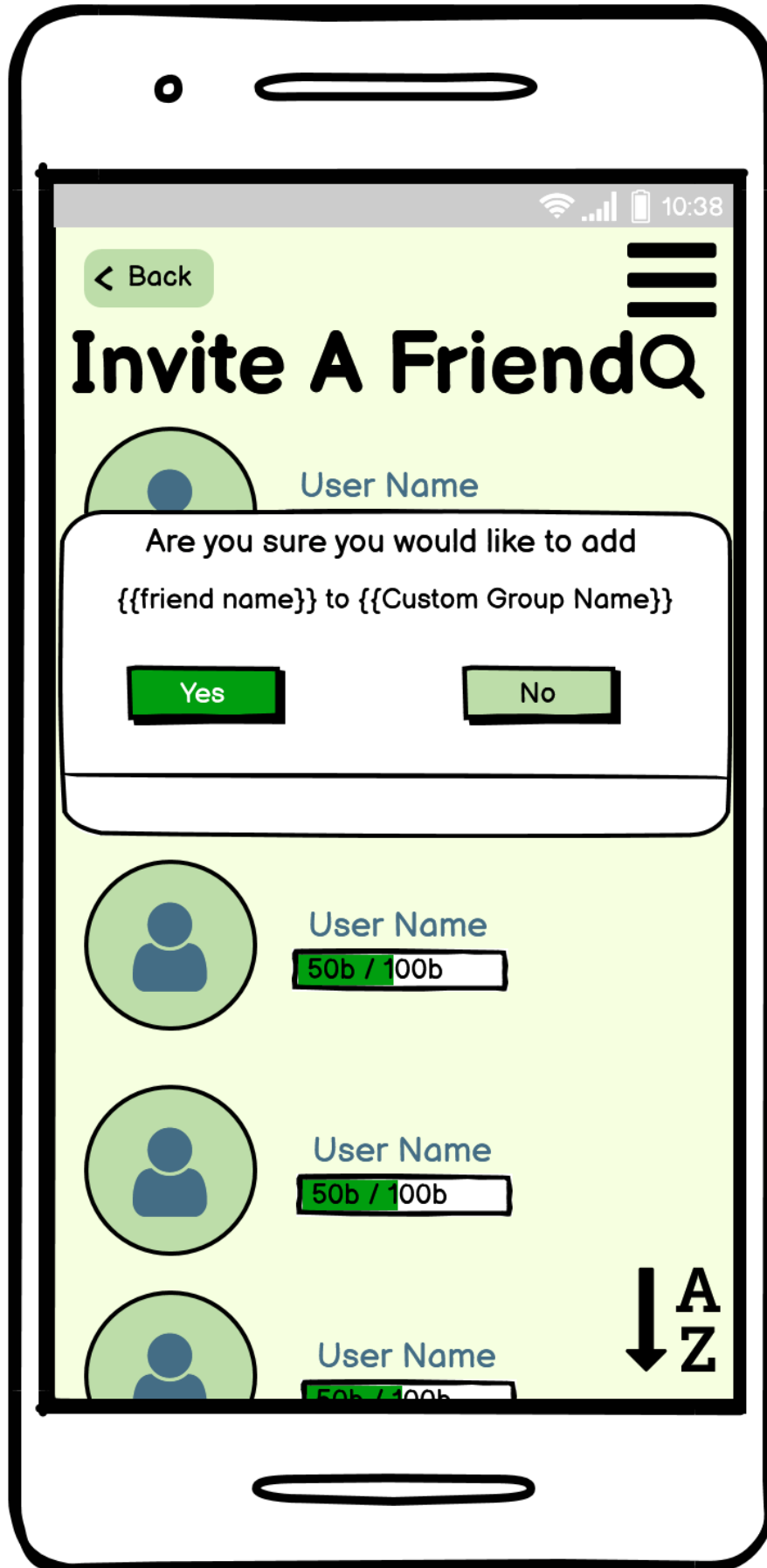


## Leave Group Screen:



**Friends List Search Screen:**

## Add A Friend Confirmation Screen:





Home Screen with Menu:

